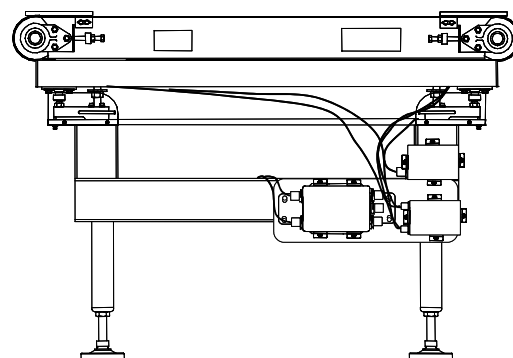


In-Motion Weigh Conveyor

9477	Specifications
Standard size (W, L, H)	• 24" W x 47" L x 32" H
Custom sizes: Width Length Height	• 12" through 42" • 24", 36", 44" through 84" • 24" through 56" (± 2" adjustable)
Fixed speed	• 30 through 240 feet per minute
Variable speed	• 30 to 100, 80 to 160, 120 to 200, 150 to 240 feet per minute
Capability	• 15 to 100 cartons per minute
Power	• 220V, 440V, 575V; 3 phase; 50/60 Hz
Motor	• 1/4, 1/2 Horse power, 56C-face, TENV
Finish	• Mild steel (standard) • Stainless steel (optional)
Belts	• Seamless habiset black • USDA approved seamless white
Load cells	• Four (4) 5,000 division, 250 lb analog load cells
Hazardous available	• Class I or II, Division I or II, groups C, D, E, F, and G
Photoeyes	• Two (2) UL & CSA approved
Operating temperature	• 14° F to 104° F (-10° C to 40° C) • 10 to 95% humidity, non-condensing

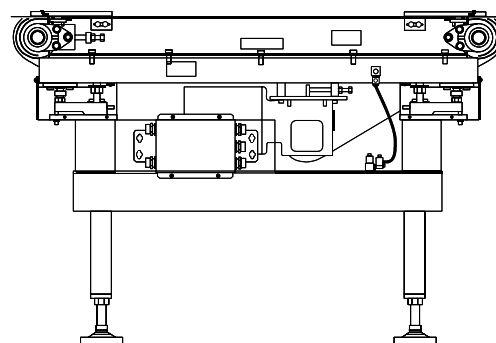
Rugged, Dependable



9477

9477 Mach II	Specifications
Minimum size (W, L, H)	• 24" W x 47" L x 24" H
Custom sizes: Width Length Height	• 24" through 42" • 47" through 84" • 24" through 56"
Capability	• 85 to 160 cartons per minute
Speed	• 250 through 600 feet per minute
Load cells	• Four (4) 5,000 division, 250 lb analog load cells
Photo eyes	• Standard reflective for packages over 2" high, or an optional banner send receive for packages down to 1/4" high
Motor	• 1 Horse power
Special features	• Anodized aluminum deck • Highly balanced aluminum rollers • Woven belt (no seam)

Highly Balanced Rollers



9477 Mach II

Contact your local **METTLER TOLEDO** authorized distributor or sales office for further information.

Produced in a
Facility that is

