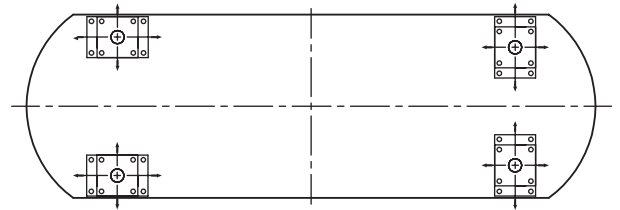
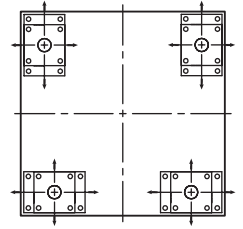
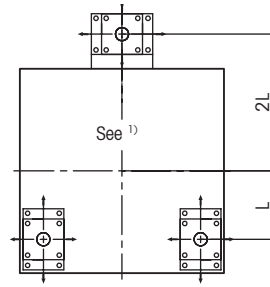
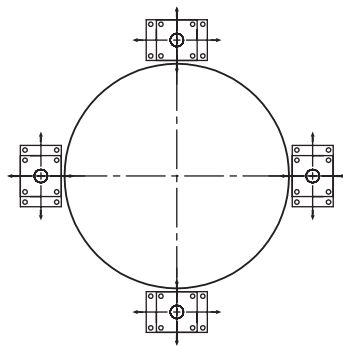
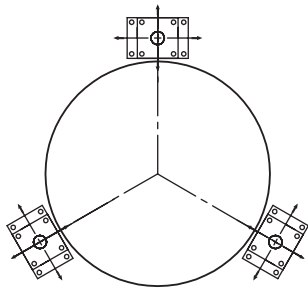


SWC515 PinMount™ Weigh Module Arrangements



¹⁾ Provides equal load distribution, but the stability of this arrangement must be assured.

Order Information SWC515 PinMount™ – Weight Module Assembly

Order Information, Weigh Module Assembly					Item No.		
Size	Rated Capacity	Description	Class	Cable, Material/Length	Material, Weigh Module		
					Zinc Plated	304	316
1	7.5 t / 16.5 klb	Weigh Module Assembly	C3/III M n:5	PU / 12 m (39.4ft)	30131976	30131977	30131978
	15 t / 33 klb				30131979	30131980	30131981
	22.5 t / 49.6 klb				30131982	30131983	30131984
	7.5 - 22.5 t / 16.5 - 49.6 klb	Stabilizer ¹⁾	-	-	72205444	72205445	72242585
		Spacer Plate			72245532	72206153	72247333
		Dead Stand			72206154	72206155	-
		Shock/Vibration Pad ²⁾			72246646	72207262	72247334
		Thermal Isolation Pad 80°C ²⁾			72246647	72207263	72247335
		Thermal Isolation Pad 170°C ²⁾			72246648	72207264	72247336
2	30 t / 66 klb	Weigh Module Assembly	C3/III M n:10	PVC / 13 m (42.5ft)	72249169	72249170	-
	50 t / 110 klb				72249204	72249205	
	30 - 50 t / 66 - 110 klb	Stabilizer ¹⁾	-	-	72248968	72248969	
		Spacer Plate			72249203	72249206	
		Dead Stand			72249173	72249174	
		Shock/Vibration Pad ²⁾			72255072	72255075	
		Thermal Isolation Pad 80°C ²⁾			72255073	72255076	
		Thermal Isolation Pad 170°C ²⁾			72255074	72255077	
	3	100 t / 220 klb	Weigh Module Assembly	C3/III M n:10	PVC / 13 m (42.5ft)	72249171	
100 t / 220 klb		Stabilizer	-	-	72248970	72248971	
		Spacer Plate ¹⁾			72249213	72249214	
		Dead Stand			72249175	72249176	
		Shock/Vibration Pad ²⁾			72255078	72255081	
		Thermal Isolation Pad 80°C ²⁾			72255079	72255082	
		Thermal Isolation Pad 170°C ²⁾			72255080	72255083	

Bolded entries are stocked

¹⁾ 1 or 2 per weigh module.

²⁾ Includes Spacer Plate.

Order Information SWC515 PinMount™ – Weigh Module without Load Cell

- SafeLock™ allows installation of weigh module hardware without load cell to avoid sensor damage
- Combine weigh module with other load cells (special cable lengths, etc.)
- Use weigh module with dummy load cell for level detection systems

Order Information, Weigh Module Kit		Item No.			Suitable Load Cells						
Size	Rated Capacity	Material, Weigh Module			Class	Item No.					Dummy Load Cell
		Zinc Plated	304	316		Cable, Material / Length					
						PU / 12 m (39.4ft)	PU / 20 m (65.6ft)	FEP / 12 m (39.4ft)	FEP / 20 m (65.6ft)	PVC / 13m (42.5ft)	
1	7.5 t / 16.5 klb	30131985	30131986	30131987	C3/III M n:5	30058060	30058064	30105781	30105786	-	30238196
	C3/III M n:5				30058061	30058065	30105783	30105788			
	C3/III M n:5				30058062	30058066	30105784	30105789			
2	30 t / 66 klb	72248964	72248965	-	C3/III M n:10	-	-	-	-	71201709	72188111
	50 t / 110 klb				C3/III M n:10	-	-	-	-	71201710	
3	100 t / 220 klb	72248966	72248967	-	C3/III M n:10	-	-	-	-	71201711	72188112

Bolded entries are stocked

0782 Cable Colors

Colour	Function
Green	+ Excitation
Black	- Excitation
White	+ Signal
Red	- Signal
Yellow	+ Sense
Blue	- Sense
Yellow (long)	Shield

SLC611 Cable Colors

Colour	Function
Green	+ Excitation
Black	- Excitation
White	+ Signal
Red	- Signal
Yellow	Shield

Full Connectivity

METTLER TOLEDO supplies various data communication interfaces that enable our sensors and instruments to communicate with your PLC, MES, or ERP systems.



METTLER TOLEDO Service

Our extensive service network is among the best in the world and ensures maximum availability and service life of your product.

Weighing Electronics

METTLER TOLEDO offers a complete family of electronics from simple weighing to application solutions for filling, stock control, batching, formulation, counting, and checkweighing.



Quality certificate ISO 9001
Environment certificate ISO 14001

Subject to technical changes.
© 08/2015 Mettler-Toledo AG
Printed in Switzerland MTSI 44099104
MarCom Industrial

www.mt.com

Visit for more information