

High-Strength Weighbridge

Designed for Multiple Applications



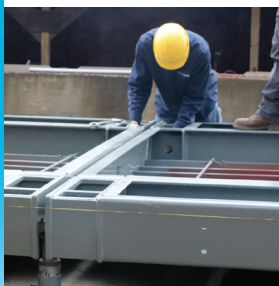
High Accuracy

POWERCELL® load cells provide high accuracy for applications that cannot afford costly weighing errors. The scale has a concentrated load capacity (CLC) of 120,000 pounds and weighs in 10-pound increments. POWERCELL® technology maintains accuracy even in extreme climates and environments.



Easy Maintenance

Easy-to-remove cover plates allow access to load cells from the top of the scale. This design simplifies inspections and maintenance. Because service technicians spend less time on routine maintenance and emergency repairs, they get your scale back in service with minimal downtime.



Versatile Design

The VTC251 truck scale is designed to accommodate your future requirements. A simple system for connecting modules makes it easy to extend the length of a scale or reconfigure it for multiple-axle weighing. The VTC251 is an ideal replacement scale for installation in existing foundations.



Proven to Last

We have tested actual scale modules for 2 million cycles with a minimum live load of 80,000 pounds (equal to 20 years of vehicle traffic). Our life-cycle test program verifies a scale's ability to survive the real-world demands of vehicle weighing. No other manufacturer does comparable testing.



VTC251 Truck Scale

The VTC251 concrete-deck truck scale is an exceptionally durable weighbridge that delivers years of reliable service. It features a 10-inch-thick concrete driving surface reinforced by a robust steel understructure. This true composite design effectively combines the superior compressive strength of concrete with the high tensile strength of steel. By positioning strength guides directly under the tire path, we put the strongest structural components exactly where the greatest strength is needed. A system of angled ribs positioned between the strength guides increases durability by providing additional shear transfer to the weighbridge. These simple design innovations enable us to offer you a superior truck scale that is designed to last.

This rugged and highly reliable truck scale is backed by the industry's finest service network and most powerful

10 Year Warranty

METTLER TOLEDO

VTC251 Truck Scale**Modular Composite Weighbridge**

Specifications	
Concrete Thickness	10 in (254 mm)
Scale Widths	9 ft-10 in, 10 ft, 11 ft, 12 ft (3, 3.3, 3.7 m)
Scale Lengths	10 to 140 ft (3 to 42.7 m)
Profile	14.5 in (368 mm)
Module Lengths	10 ft, 15 ft, 17 ft-6 in, 20 ft, 23 ft-4 in (3, 4.6, 5.3, 6.1, 7.1 m)
Usage	100,000 trucks per year (average 400 trucks per day)
Capacity*	120,000 lb (scale lengths ≤ 23 ft-4 in) 200,000 lb (scale lengths > 23 ft-4 in)
Foundation Types	Variable Footer, Full Slab, or Pit
eMin	10 lb (5 kg) / 20 lb (10 kg) dual range
nMax	10,000 divisions
NTEP Handbook 44 Tested: Concentrated Load Capacity	120,000 lb (54,431 kg)
NTEP Certificate	19-149

**Strength Guides**

The VTC251 cross section shows how strength guides are positioned directly under the tire path. This arrangement adds more strength than competitors' designs that use I-beams as side rails to provide a form for the concrete deck.

Features	Benefits
StrikeShield™ Lightning Protection	Prevents lightning damage to load cells and other equipment.
International Intergard® Finish	Protects steel against corrosion even in the harshest environments.
30t POWERCELL® PDX® Load Cells	Stainless steel load cells provide highest accuracy and reliability.
Top Access to Load Cells	Makes it easy to perform inspections and maintenance.
Scale Terminal	Full-featured terminal for inbound/outbound weighing and filling operations.

Options:

- Multi-Axle Configurations
- High-Clearance Risers
- Manholes
- Side Rails
- Grain Dump
- Dolly Landing Pads
- Debris Seals
- DataBridge™ Vehicle Scale Software
- Unattended Driver Terminals
- 50t Load Cells



Scale Terminals



Remote Displays

Software



Unattended Terminals



Produced in a
facility that is

**Mettler-Toledo, LLC**

1900 Polaris Parkway
Columbus, Ohio 43240
Tel. (800) 786-0038
(614) 438-4511
Fax (614) 438-4900

Subject to technical changes.
© 2020 Mettler-Toledo, LLC
01/2020
30302289

www.mt.com/vehicle

For more information