

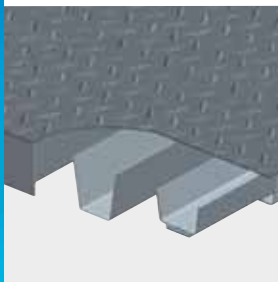
Orthotropic Steel Weighbridge

Quality, Dependability, and Value



Analog Load Cells

The 0782 analog load cell's rocker-column design automatically aligns load forces for accurate weighing, while eliminating the inherent maintenance and fatigue issues of dual-ended, shear-beam designs. The hermetically sealed stainless steel load cell is rated IP68 for use in all environments.



Orthotropic Design

Model VTS100 easily handles the forces generated by normal truck traffic, distributing concentrated loads more effectively than standard I-beam deck structures. The robust orthotropic design is similar to those used on the Golden Gate Bridge and many other heavily travelled highway bridges around the world.



Proven Performance

Using the "Module Masher" accelerated-life-cycle test stand, actual scale modules are tested for 1 million cycles with a minimum 60,000-lb dual-tandem-axle live load tire pattern. This is one way we go beyond the competition to ensure that you get the most reliable scale in the industry.



Options/Upgrades

Choose from a large selection of options and accessories that let you tailor a truck scale to fit your application. Whether you are adding an unattended terminal, manhole, side rails, wireless remote display, or other options, upgrading your scale is simple.



VTS100 Truck Scale

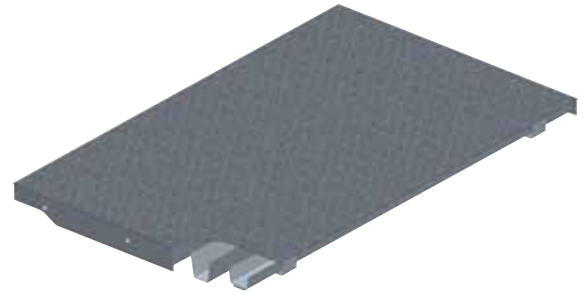
Model VTS100 is a steel-deck truck scale that delivers proven performance at an affordable price. It consists of a steel deck supported by orthotropic ribs that are completely sealed from the elements by automated, continuous welds. By pressure testing every rib, we ensure an airtight seal that eliminates the potential for rusting from inside, unlike scale designs that sandwich beams between top and bottom plates using intermittent welds. The ribs are shaped to distribute concentrated loads better than I-beam designs, leading to a longer life for your scale. As a result, you get a weighbridge capable of handling legal over-the-road traffic throughout a long service life.

**OUR TRUCK SCALES ARE BACKED BY THE
INDUSTRY'S FINEST SERVICE NETWORK AND
MOST POWERFUL 5 YEAR WARRANTY**

VTS100 Truck Scale

Modular Steel Deck Weighbridge

Specifications	
Deck Plate Thickness	5/16 in (8 mm)
Scale Widths	9 ft-10 in, 11 ft (3, 3.3 m)
Scale Lengths	10 to 140 ft (3 to 42.7 m)
Profile	17 in (432 mm)
Module Lengths	10 ft, 15 ft, 17 ft-6 in, 20 ft, 23 ft-4 in (3, 4.6, 5.3, 6.1, 7.1 m)
Steel Type	ASTM A-36
Capacity*	90,000 lb (scale lengths ≤ 23 ft-4 in) 150,000 lb (scale lengths > 23 ft-4 in < 60 ft) 200,000 lb (scale lengths ≥ 60 ft)
Foundation Types	Variable Footer, Beam Slab, Deep Pit, or Temporary Frame
eMin	20 lb (10 kg)
nMax	10,000 divisions
Concentrated Load Capacity	80,000 lb (36,287 kg)
NTEP Certificate	01-070A4



The orthotropic-rib design ensures that the VTS100 truck scale has no welds in high-stress areas. This greatly reduces fatigue at the welds, a common cause of premature failure in other scale designs.

Applications

For weighing over-the-road vehicles in a wide variety of above-ground and deep-pit applications, including:

- Solid Waste
- Ports
- Forest Products
- Bulk Foods
- Dairy
- Scrap Metals
- Utilities
- Chemicals
- Agriculture

*Note: 200,000 lb is the maximum gross capacity that any truck scale can have and still maintain 20-lb increments in legal-for-trade applications.

Features	Benefits
Orthotropic Ribs	Safe, robust, and reliable design provides a long service life.
International Intergard® Finish	Protects steel against corrosion even in the harshest environments.
30t Analog Load Cells	Stainless steel load cells provide reliable weighing.
Steel Deck	Enables you to start weighing immediately after scale installation.

Options:

- High-Clearance Risers
- Manholes
- Side Rails
- Dolly Landing Pads/Deck Runners
- DataBridge™ Vehicle Scale Software
- Unattended Driver Terminals
- Remote Displays
- Temporary Frame



Side Rails



Risers



Software



Remote Displays



Produced in a facility that is



Mettler-Toledo, LLC

1900 Polaris Parkway
Columbus, Ohio 43240
Tel. (800) 786-0038
(614) 438-4511
Fax (614) 438-4900

Subject to technical changes.
© 2014 Mettler-Toledo, LLC
09/2014
TR03515.0E

www.mt.com/vehicle

For more information