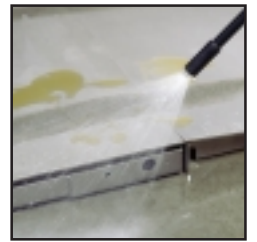




**VERTEX®**

Industrial Floor Scales

Heavy-Duty Design



# Exceptional Accuracy and Durability for Tough Industrial Environments

**METTLER TOLEDO**

INDUSTRIAL  
FLOOR SCALES

# Heavy-Duty Scales that Meet the Needs of Industrial Applications

- Wide Range of Standard Sizes and Capacities
- Built for Extreme Duty in Harsh Environments
- Scale Engine Provides Precise, Repeatable Performance

VERTEX floor scales combine exceptional accuracy with the durability to stand up to tough industrial environments. All scale components are made to last, with critical tolerances built in at the factory. Because components do not become loose or out of specification, VERTEX scales maintain their weighing accuracy and repeatability even after years of heavy use.

These floor scales are ideal for concentrated-loading applications such as bins, carts, and forklifts. They are designed to withstand the conditions common to shipping hubs, chemical processing, pharmaceutical processing, food processing, and other industrial environments. Our family of VERTEX floor scales includes a variety of sizes, capacities, materials, and accessories that can be combined to meet your specific needs. Two models are available for interfacing with different types of terminals:

Model 2158 floor scales are used with analog terminals. They provide fully electronic weighing and interface with the complete line of METTLER TOLEDO analog instruments.

Model 2162 floor scales feature an enhanced junction box for connecting

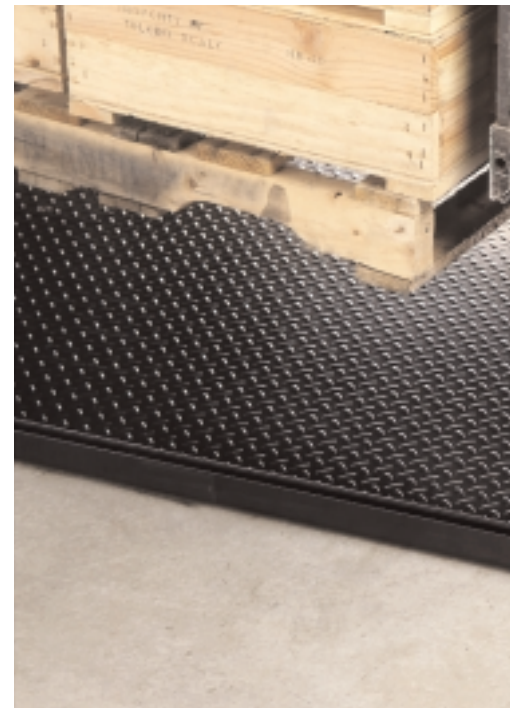
to the latest generation of METTLER TOLEDO ID terminals. These terminals can give your scale greater capabilities for applications such as multi-range weighing, checkweighing, totalizing, counting, and formulation.

## Heavy Duty

VERTEX floor scales are designed with tough industrial environments in mind. They can handle 100% end loading, making them ideal for use with concentrated-loading applications. Each load cell has a mechanical overload stop that protects against damage from accidental overloads. The scales are also built to withstand side impacts. A heavy-duty frame protects the load cells from the damage that side impacts can cause.

## Versatile

The scales are versatile enough to be installed on top of the floor, in a pit, or used as a portable scale. Top-of-floor installations can be equipped with ramps to make them easily accessible from all four sides. Pit installations use our Quick-Pit frames, which ensure a perfectly square installation that is flush with the floor. The scales can be made easily portable by equipping them with forklift channels for easy lifting or with a wheel kit.



## Harsh Environments

We use high-quality materials and finishes that protect your scale in harsh environments. There are two options for the scale frame and platform:

- Carbon steel painted with a durable, two-part epoxy finish.
- Stainless steel for extra protection in washdown and corrosive environments.

Load cells are made of stainless steel and hermetically sealed. NEMA 4X/IP65 junction boxes are made of stainless steel to protect the electronic components inside them.

## Safe

Our standard tread-plate surface offers safe footing for workers. Plus, the scale's low profile means that less effort is required to manually place a load on the scale.

## Hazardous Areas

Our load cells are approved for use in hazardous areas in most



The scales are designed for 100% end loading to handle forklift traffic.

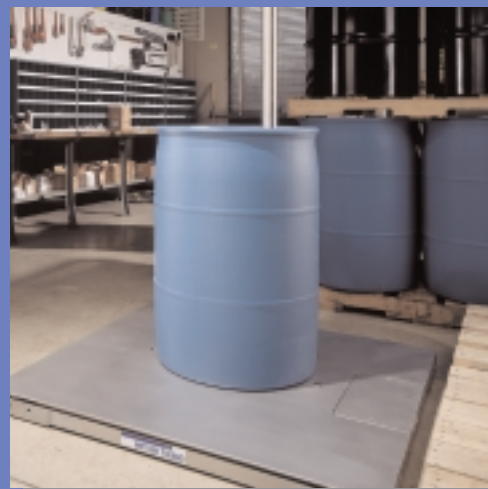
markets. VERTEX load cells carry Factory Mutual, European Ex, and Canadian CSA Ex approvals when used with a METTLER TOLEDO intrinsically safe terminal.

#### **FastFab™ Custom Scales**

In addition to standard VERTEX scales, we offer custom sizes and capacities. Our FastFab team works together to engineer and manufacture a custom scale that meets your specific requirements. With our design technology and world class manufacturing capabilities, we can deliver the highest-quality custom scales to you in the shortest time possible.

#### **High Accuracy**

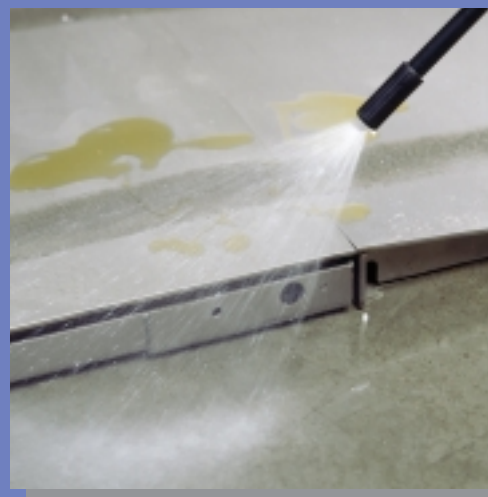
VERTEX scales are NTEP certified for 5,000-division accuracy. For applications that require a higher level of performance, we offer versions of these scales with 10,000-division accuracy. We can provide a factory test loading report verifying 5,000-division accuracy or 10,000-division accuracy (not legal for trade).



VERTEX scales provide the dependable repeatability needed for batching and filling.



VERTEX scales are ideal for high-precision, heavy-capacity counting applications.



Choose from 304 or 316 stainless steel for sanitary applications.

## VERTEX Accessories

### A. Quick-Pit Frame

With our Quick-Pit frame, installing a VERTEX floor scale in a pit is an easy, trouble-free process. Just level the frame in the pit and pour concrete to create a form. After the concrete has cured, install the scale and anchor it. The result is a pit scale that is square and flush with the floor.

### B. Forklift Channel Frame

This frame makes it easy to move the scale with a forklift. Simply slide the forks into the channels and lift. The heavy-duty frame protects the scale from damage. Available for 3' x 3' to 5' x 5' scales (1,000-lb to 20,000-lb capacities).

### C. Scale Guards

Protect your scale from side-impact damage with scale guards. When a forklift hits the side of a scale, the impact can bend the scale's frame or damage its load cells. The angled guard prevents damage by deflecting the impact upward. Scale guards can be used on any or all sides of a floor scale.

### D. Ramps

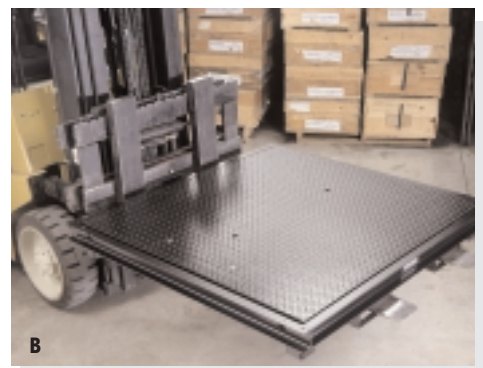
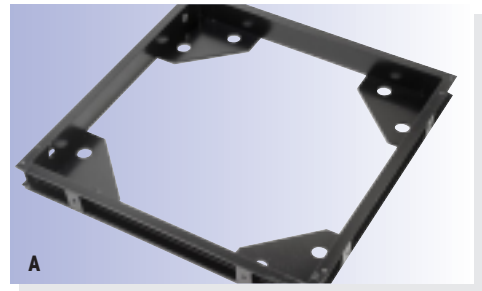
Ramps allow easy access from any side of a scale, eliminating the need to lift heavy loads onto the platform. Standard ramps are 36" long. Low-angle ramps (60" long) are available to make wheeling loads onto the scale safer and easier.

### E. Instrument Columns

Bolt-on and free-standing instrument columns are available in carbon steel and stainless steel. Standard height is 39 inches. Brackets can be supplied for mounting each type of indicator to the column.

### F. Truck Dock Frame

This rugged frame is made of heavy-duty steel channel to protect the sides of the scale. It withstands side impacts, providing maximum protection in high-traffic areas such as loading docks.

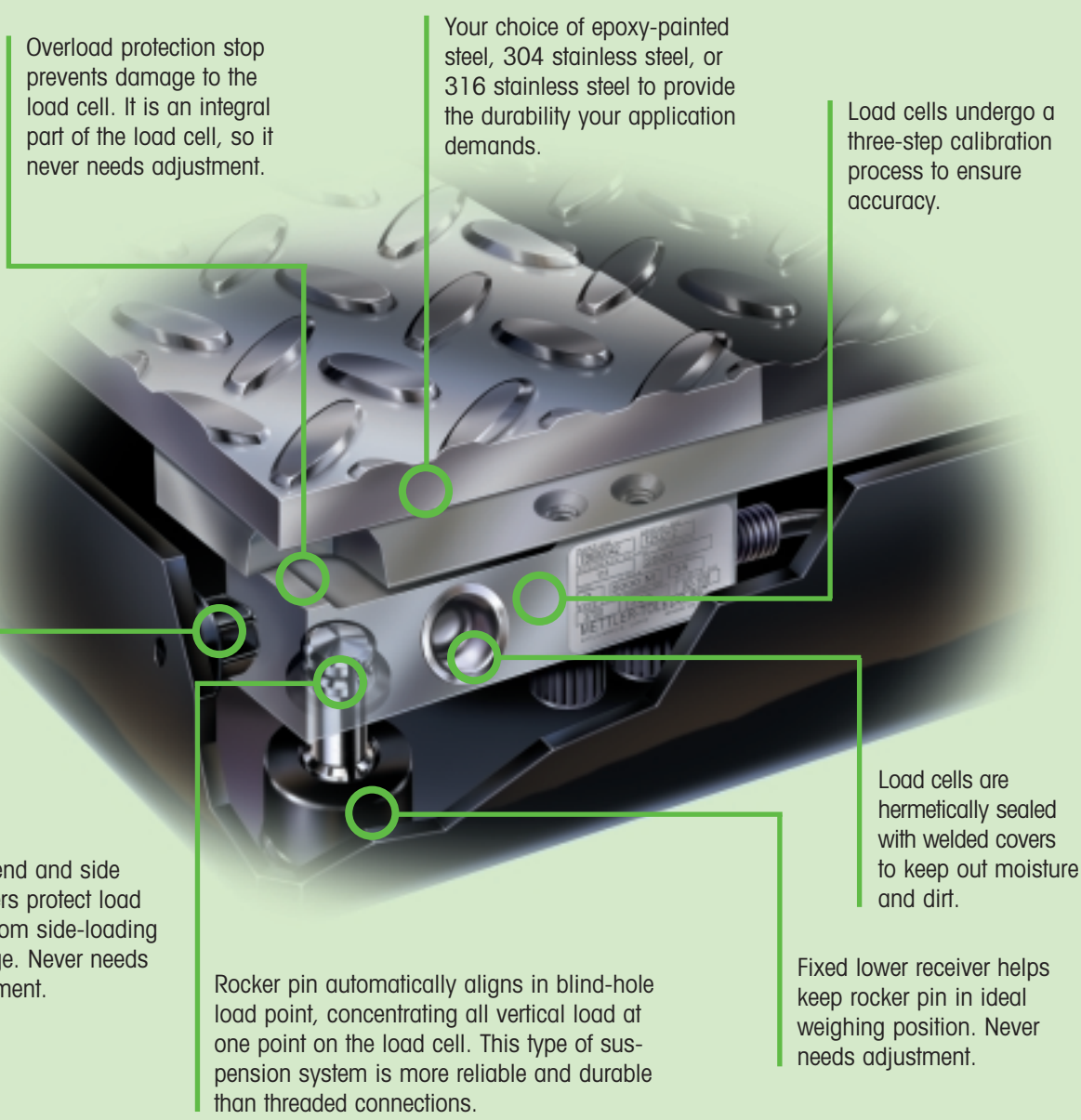


## Technology Does Make a Difference

Your scale needs to do more than give an accurate weight reading when it's brand new. It needs to give accurate readings time after time, even when used for demanding applications in industrial environments. How do we ensure this high level of performance? METTLER TOLEDO believes that technology is the key. We combine innovative designs with the manufacturing capabilities to turn those designs into precision products. We start with four goals in mind:

- The load cells must provide accurate, repeatable performance
- The design must protect the load cells from damage
- The suspension system must ensure vertical loading
- The scale must be designed for durability

At the heart of each scale is our VERTEX® Scale Engine. It consists of the load cells and the suspension system that transmits weight from the platform to the load cells. We design scale components to perform reliably, without the need for adjustment. And we test our products extensively to ensure that you get a scale you can count on. Take a look at what makes our scales different:



Overload protection stop prevents damage to the load cell. It is an integral part of the load cell, so it never needs adjustment.

Your choice of epoxy-painted steel, 304 stainless steel, or 316 stainless steel to provide the durability your application demands.

Load cells undergo a three-step calibration process to ensure accuracy.

Fixed end and side bumpers protect load cells from side-loading damage. Never needs adjustment.

Rocker pin automatically aligns in blind-hole load point, concentrating all vertical load at one point on the load cell. This type of suspension system is more reliable and durable than threaded connections.

Load cells are hermetically sealed with welded covers to keep out moisture and dirt.

Fixed lower receiver helps keep rocker pin in ideal weighing position. Never needs adjustment.

Specifications			
Standard Platform Size	3 x 3 to 5 x 7 ft 914 x 914 to 1524 x 2134 mm	4 x 4 to 5 x 7 ft 1219 x 1219 to 1524 x 2134 mm	4 x 4 to 5 x 7 ft 1219 x 1219 to 1524 x 2134 mm
Available Capacities	500 to 5000 lb 300 to 3000 kg	10,000 lb 6000 kg	20,000 lb 10,000 kg
Platform Height	3 in 76 mm	3 3/8 in 85 mm	4 in 102 mm
Construction	Two-part, epoxy-painted mild steel, 304 stainless steel, or 316 stainless steel		
Load Cell Type	Hermetically sealed stainless steel - four 350-ohm load cells		
Load Cell Suspension	Stainless steel rocker pin assembly		
Junction Box	Top access, stainless steel NEMA 4X / IP65		
End Loading	100% end loading		
Standard Operating Temp.	14°F to 104°F (-10°C to 40°C)		
Metrological Approvals	NTEP, Measurement Canada, OIML		
Hazardous Area Approvals	FM, CSA, Ex		
Shipping Weight	275 to 800 lb 125 to 363 kg	510 to 1000 lb 231 to 454 kg	600 to 1200 lb 273 to 545 kg
Compatible METTLER TOLEDO Instruments	HAWK™, PANTHER®, LYNX®, JAGUAR®, PUMA®, LYNXBATCH®, ID terminals, or SC counting scale with analog scale kit		

**Options:**

- Ramps: standard or low angle
- Accessory mounting plate
- Quick-Pit frame
- Wheel kit
- Optional load cell cable length
- Custom sizes
- Columns: free-standing or bolt-on
- Scale side guards
- Forklift portability frame
- Remote junction box mounting
- NTEP or OIML load cells
- Safety tread or smooth deck plate

Produced in a facility that is



	TEL	FAX	TEL	FAX	
<b>METTLER TOLEDO</b>					
<b>USA and Canada</b> 1900 Polaris Parkway Columbus, Ohio 43240					
TEL. (800) 786-0038 (614) 438-4511					
FAX (614) 438-4900					
<b>Headquarters</b> 8606 Greifensee Switzerland					
TEL. (41-1) 944 22 11					
FAX (41-1) 944 30 60					
<b>Australia</b>	(61-3) 9644 5700	(61-3) 9645 3935	<b>Korea</b>	(82-2) 518-2004	(82-2) 518-0813
<b>Austria</b>	(43-1) 604 1980	(43-1) 604 2880	<b>Malaysia</b>	(60-3) 703-2773	(60-3) 703 8773
<b>Belgium</b>	(32-2) 334 0211	(32-2) 378 1665	<b>Mexico</b>	(52-5) 547 5700	(52-5) 541 2228
<b>Brazil</b>	(55-11) 421 5737	(55-11) 7295-1692	<b>Netherlands</b>	(31-344) 638363	(31-344) 638390
<b>China (Industrial)</b>	(86-519) 6642040	(86-519) 6641991	<b>Norway</b>	(47-22) 30 44 90	(47-22) 32 70 02
<b>China (Systems)</b>	(86-21) 6485-0435	(86-21) 6485-3351	<b>Poland</b>	(48-22) 651 9232	(48-22) 651-7172
<b>Croatia</b>	(385-1) 23 36 317	(385-1) 23 04 147*	<b>Russia</b>	(7-095) 921 9211	(7-095) 921 6353
<b>Czech Republic</b>	(420-2) 254962	(420-2) 24247583	<b>Singapore</b>	(65) 778 6779	(65) 778 6639
<b>Denmark</b>	(45-43) 27 08 00	(45-43) 27 08 28	<b>Slovak Republic</b>	(421-7) 43 42 74 96	(421-7) 43 33 71 90
<b>France</b>	(33-1) 30 97 17 17	(33-1) 30 97 16 16	<b>Slovenia</b>	(386-61) 162 1801	(386-61) 162 1789*
<b>Germany</b>	(49-641) 50 70	(49-641) 52951	<b>Spain</b>	(34-93) 223 2222	(34-93) 223 0271
<b>Hungary</b>	(36-1) 257 9889	(36-1) 256 2175	<b>Sweden</b>	(46-8) 702 50 00	(46-8) 642 45 62
<b>India</b>	(91-22) 857-0808	(91-22) 857-5071	<b>Switzerland</b>	(41-1) 944 45 45	(41-1) 944 45 10
<b>Italy</b>	(39-2) 333321	(39-2) 356-2973	<b>Taiwan</b>	(886-2) 2579-5955	(886-2) 2579-5977
<b>Japan</b>	(81-6) 6949-5901	(81-6) 6949-5944	<b>Thailand</b>	(66-2) 719 6480	(66-2) 719 6479
<b>Kazakhstan</b>	(7-3272) 50 63 69	(7-3272) 60 88 35	<b>United Kingdom</b>	(44-116) 235 7070	(44-116) 236 6399
					*Call for fax.
					<b>Internet</b> www.mt.com
					Specifications subject to change without notice.
					© 2000 Mettler-Toledo, Inc.
					METTLER TOLEDO® and VERTEX® are registered trademarks of Mettler-Toledo, Inc.
					Printed in USA.
					10M0700 FLOOR SCALES 00-FS03337.0E